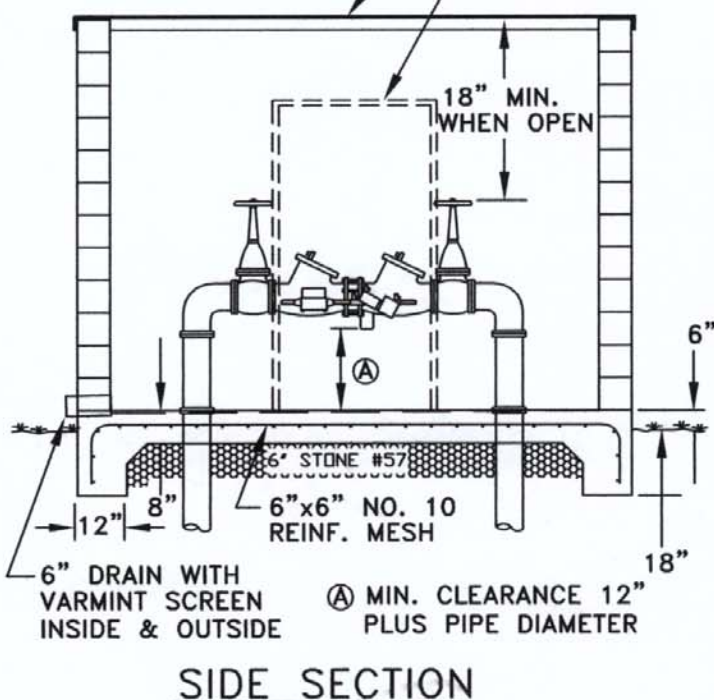


### NOTES

- \* BACKFLOW DEVICE TO REMAIN ACCESSIBLE AT ALL TIMES.
- \* TEST COCKS ARE TO BE PROVIDED WITH NIPPLES & CAPS.
- \* STRAINER REQUIRED ON ALL DOMESTIC BACKFLOW DEVICES. CHECK WITH FIRE MARSHALL FOR COMBINATION LINES.
- \* THIS DRAWING INDICATES MINIMUM CLEARANCE AND ACCESS ONLY.
- \* SECURITY PROCEDURES MAY BE DESIRABLE.
- \* INSULATION/HEAT RECOMMENDED TO PREVENT FREEZING.
- \* WALL CONSTRUCTION AND OUTSIDE FINISH IS OPTIONAL WITH OWNER.
- \* RISING STEM VALVES (OS&Y) ARE TO BE INSTALLED ON ANY FIRE LINES.
- \* REMOTE READER TO BE INSTALLED NO ALL DETECTOR BYPASS UNITS.
- \* REMOTE READER TO BE INSTALLED THROUGH OUTSIDE WALL.
- \* INLET PIPING MUST BE OF DUCTILE IRON. DUCTILE PIPE TO EXTEND A MINIMUM OF 36" OUTSIDE THE BOX.

INSTALL ALL ITEMS ACCORDING TO MANUFACTURERS SPECIFICATIONS



METRO WATER SERVICE APPROVED ALUMINUM BOX ENCLOSURE WITH FRONT AND REAR ACCESS DOORS OR PANELS ARE RECOMMENDED.

ALL DUCTILE IRON PIPE INSIDE BOX TO BE FLANGED (CLASS 52)

**METRO WATER SERVICES**  
BACKFLOW PREVENTER BOX  
FOR 6" THROUGH 8"  
(DOMESTIC & FIRE LINES)

NOT TO SCALE DATE: 07/10/08

DWG. NO. CDETF01

**METRO**  
WATER SERVICES

*Hal Balthrop*  
LICENSED DISTRIBUTION OPERATOR

*Stephen P. Harker*  
WATER SERVICES DIRECTOR  
FIRE CHIEF

*Rubel C. Bennett*  
CODES ADMINISTRATION DIRECTOR  
PLANNING EXECUTIVE DIRECTOR